



www.zmccabinetry.com

CONTACT US

ZMC in Fremont
43645 S. Grimmer Blvd. Fremont, CA 94538
Tel: 510-226-8883
Fax: 510-360-9627
Email: zmcproducts@gmail.com

ZMC in Rancho Cordova
11261 Sunrise Park Dr. Rancho Cordova, CA 95742
Tel: 916-631-8889
Email: zmckitchenbath@gmail.com

ZMC in West Sacramento
3232 Reed Ave. West Sacramento, CA 95605
Tel: 916-898-5910
Email: zmccabinetsoutlet@gmail.com

ZMC Manufacturer
Access Best Building Supply
2701 Citrus Rd, Rancho Cordova, CA 95742
Email: abbwarehouse@gmail.com



**SPRING COLLECTION
2024**

2024 Spring, ZMC Products, Inc. ZMC Kitchen and Bath, Inc. ZMC Cabinets Outlet, Inc. All Rights Reserved.
The cabinet color variation may apply slightly on catalog due to printing processes. Please contact sales representatives for samples.



ZMC
CABINETRY

**CUSTOMIZE
YOUR DREAM
KITCHENS**

TABLE OF CONTENTS

- 01** INTRO TO ZMC
- 03** FRAMED COLLECTION
- 04** DOOR STYLE OPTIONS
- 05** PHOTO GALLERY
- 11** CABINET INFO
- 13** PLANNING YOUR DREAM KITCHEN
- 14** GETTING STARTED
- 15** HOW TO READ CABINET ITEM CODE
- 16** BASE CABINET
- 18** SHELVES
- 19** VANITY
- 20** WALL CABINET
- 22** PANTRY
- 23** ACCESSORIES



Intro to ZMC

Welcome to ZMC Cabinetry! We are delighted to present our catalog featuring our most popular product series. Whether you're a homeowner looking to remodel your kitchen or bath, a builder working on a new project, or a remodeler seeking high-quality materials, we have a wide range of options to meet your needs.

Our kitchen cabinets are designed to bring both functionality and style to your space. We offer various series that cater to different design preferences and budgets. From modern and contemporary to traditional and classic, you'll find the perfect cabinets to transform your kitchen. Enhance your bathroom with our elegant and functional bathroom vanities.

In addition to cabinets and vanities, we provide a range of related materials to complete your project. This includes flooring, countertops, sinks, faucets, hardware, and more. Our selection ensures that you can find everything you need to create a cohesive and visually appealing space.

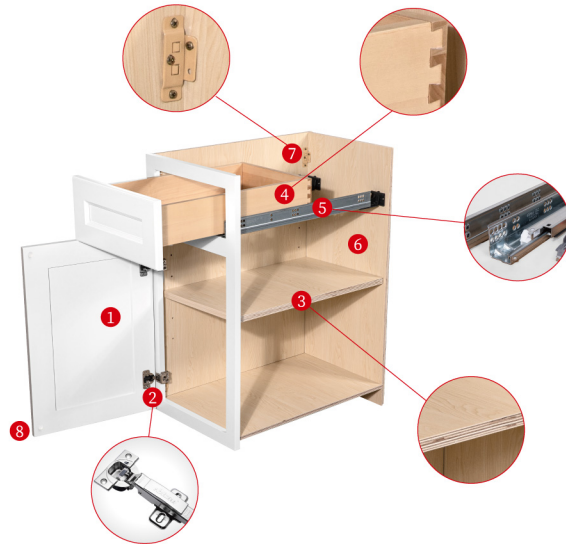
We value our relationships with wholesalers and offer competitive pricing and flexible options for our partners. If you are a wholesaler interested in partnering with us, our dedicated team will work closely with you to ensure a smooth and successful collaboration.

At ZMC Cabinetry, we prioritize customer satisfaction. Our knowledgeable team is here to assist you every step of the way, from product selection to installation guidance. We strive to provide exceptional service and support to homeowners, builders, remodelers, and wholesalers alike.

We invite you to explore our catalog and discover the latest trends in kitchen cabinets, bathroom vanities, and related materials. Our commitment to high-quality products, affordable prices, and excellent customer service sets us apart as a reliable source for all your kitchen and bath material needs.



FRAMED COLLECTION



- ❶ Partial overlay door panel, 3/4" thick door panel
- ❷ 6-way adjustable metal soft-close hinges
- ❸ Adjustable full depth shelf, 3/4" thick cabinet-grade plywood, metal shelf rests
- ❹ Dovetail drawer 5/8" solidwood side board and 3/8" plywood bottom shelf
- ❺ Full extension, under-mounted, soft-close, steel concealed drawer glides
- ❻ 5/8" or 1/2" thick cabinet grade plywood box
- ❼ Metal bracket reinforcements for base cabinets
- ❽ Door bumpers

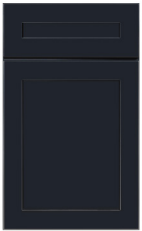
DOOR STYLE OPTIONS



NNWS



NCWS



NMBS



NGGE



NBWE



NDDB



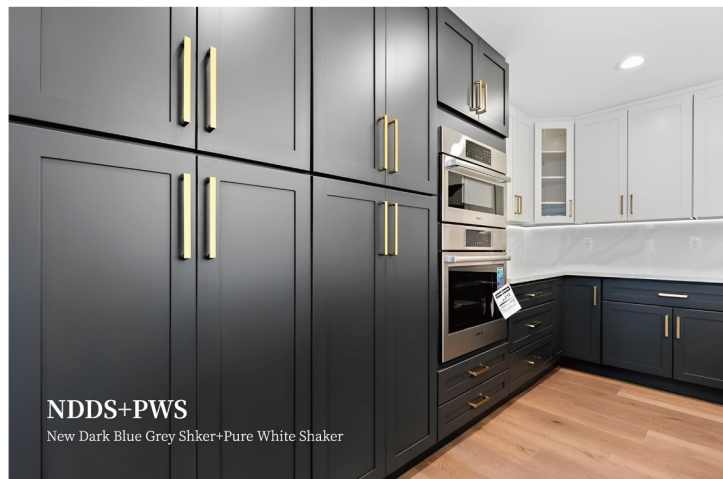
OWT



OWS



PWS







DWS

Dark Walnut Shaker



NCWS

New Cloud White Shaker

CABINET INFO

STYLE CODE	NNWS	NCWS	NMBS	NDDS	NGGE	NBWE
COLOR NAME	WHITE SHAKER	CLOUD WHITE	MATTE BLACK	GREY BLUE	DARK GREEN-E	BEGIE WHITE-E
CABINET DOOR STYLE	CLASSIC SHAKER				E-SHAPE SHAKER	
DOOR MATERIAL	BIRCH SOLID WOOD DOOR FRAME & MDF DOOR CORE					
PAINT	PREMIUM SHERWIN-WILLIAM PU PAINT					
DOOR & DRAWER FRONT CONSTRUCTION	3/4" THICKNESS; 5 PIECES MORTISE & TENON					
FACEFRAME	1-5/8" x 3/4" SOLID WOOD					
DOOR OVERLAY	1/4" OVERLAY					
CABINET BOX SIDES THICKNESS	12MM / 1/2" PLYWOOD; UV PAINT					
INTERIOR COLOR	NATURAL WOOD COLOR					
BACK PANEL	17MM / 11/16" PLYWOOD					
HINGES	DTC 6-WAY ADJUSTABLE HINGE					
SHELVES	18MM / 3/4" THICKNESS PLYWOOD					
DRAWER BOX	DOVETAIL BIRCH WOOD, 5/8" DRAWER SIDES, 3/8" DRAWER BOTTOM					
DRAWER GLIDE	FULL EXTENSION UNDERMOUNT SOFT-CLOSE					

CABINET INFO

STYLE CODE	PWS	OWS	OWT
COLOR NAME	PURE WHITE SHAKER	OFF WHITE SHAKER	OFF WHITE TRADITIONAL
CABINET DOOR STYLE	CLASSIC SHAKER		RAISED PANEL
DOOR MATERIAL	BIRCH SOLID WOOD DOOR FRAME & MDF DOOR CORE		
PAINT	PREMIUM WATERBORNE(OR LATEX) PAINT		
DOOR & DRAWER FRONT CONSTRUCTION	5 PIECES MORTISE & TENON		
FACEFRAME	1-5/8" x 3/4" SOLID WOOD		
DOOR OVERLAY	1/2" OVERLAY		
CABINET BOX SIDES THICKNESS	15MM / 5/8" PLYWOOD		
INTERIOR COLOR	MATCHING COLOR,INSIDE AND OUTSIDE		
BACK PANEL	18MM / 3/4" PLYWOOD		
HINGES	DTC 6-WAY ADJUSTABLE HINGE		
SHELVES	18MM / 3/4" THICKNESS PLYWOOD, MATCHING CABINET COLOR		
DRAWER BOX	DOVETAIL BIRCH WOOD, 5/8" DRAWER SIDES, 3/8" DRAWER BOTTOM		
DRAWER GLIDE	FULL EXTENSION UNDERMOUNT SOFT-CLOSE		

PLANNING YOUR DREAM KITCHEN

5 STANDARD KITCHEN LAYOUTS

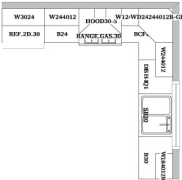
The very first step of the planning process is to determine the possible layout of your kitchen. There are five basic kitchen shapes: straight shape, Galley, L-shape, U-shape, and G-shape.



The **STRAIGHT** configuration is good for smaller homes and apartments. It offers the least efficient kitchen plan, but maximizes space.



The **GALLEY** configuration is efficient for up to two cooks in the kitchen. However, the shape allows extra room for crossing household traffic.



The **L-SHAPE** kitchen is the most common kitchen layout in American households. It provides a good amount of counter space, and the magic work triangle is executed perfectly. This design can also allow for the inclusion of a dining area or island.



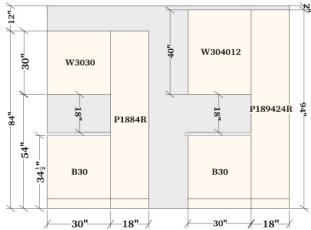
The **G-SHAPE** kitchen is a step up from the U-Shape kitchen. This design adds extra cabinet and counter space. In order to avoid feeling too closed-in, this layout works best when two of the walls are open to adjacent spaces.



The **U-SHAPE** kitchen is ideal for the solo cook. The continuous countertop and cabinets surround the cook on three sides, putting everything within reach.

THE TRADITIONAL WORK TRIANGLE

The work triangle is the standard configuration used by professionals for designing efficient kitchens. The three magical points are the areas between the refrigerator, range and sink.



GETTING STARTED

MEASURE YOUR SPACE

Accurate measurements are essential to planning your new kitchen. With these measurements your designer will be able to help you create your dream kitchen.

FLOOR PLAN

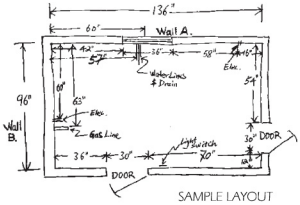
Using the measuring procedure illustrated carefully prepare a simple floor plan of your existing kitchen. Your completed floor plan should resemble the diagram shown. Make sure you show the exact locations of doors, windows, range hood vents, gas lines, water lines, drains, switches, outlets, and light fixtures. Double-check all measurements.

MEASURING PROCEDURE

Using a tape measure and graph paper, measure as outlined.

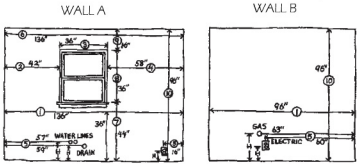
Horizontal Measurement

1. Measure from wall to wall.
2. Measure from corner to window or door opening.
3. Measure across opening from trim edge to trim edge.
4. Measure from edge of trim to far wall. Compare sum of #2, #3 and #4 measurements to step #1.
5. Mark exact locations of water line, drain, gas line and electrical outlets/switches on drawing.
6. Measure from wall to wall above window and compare to #1.



Vertical Measurement

7. Measure from floor to window sill.
8. Measure from window sill to top of window.
9. Measure from top of window to ceiling.
10. Measure from floor to ceiling. Compare to sum of #7, #8 and #9.



APPLIANCE/FIXTURE INFORMATION

Show desired locations of appliances on drawing. Also, send all your appliances specification to your designer.

	Type	Size(WxHxD)	Remark
Refrigerator			
Range			
Cooktop			
Dishwasher			
Sink			
Oven Cutout			
Trash Compactor			
Other			

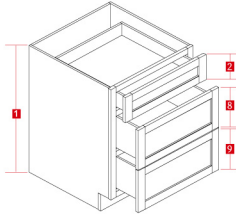
HOW TO READ CABINET ITEM CODE

The cabinet specifications combines product information, illustrations and features all into one easy-to-use reference manual.

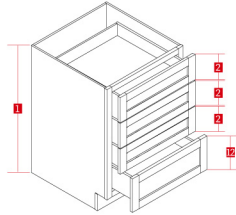
HOW TO READ CABINET ITEM CODE



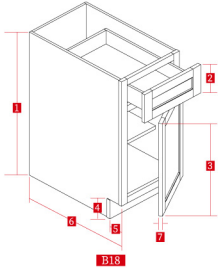
Example:



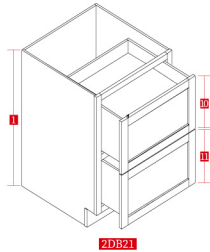
DB21



4DB21



DB18

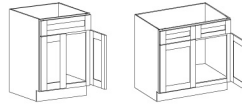


2DB21

BASE CABINET DIMENSION

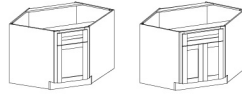
- 1 -Standard 34-1/2"
- 2 -7"
- 3 -21 3/4"
- 4 -Standard 4-1/2"
- 5 -Standard 2-1/2"
- 6 -Standard 24"(To the face frame)
- 7 -Standard 3/4"
- 8 -10-3/4"
- 9 -10-3/4"
- 10 -14-1/2"
- 11 -14-1/2"
- 12 -7-5/8"

BASE CABINET



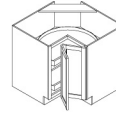
Sink Base			
Item	Dimension(Inch)		
	W	H	D
SB30	30	34-1/2	24
SB33	33	34-1/2	24
SB36	36	34-1/2	24

* Fixed Top Drawer Face

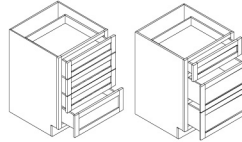


Corner Sink Base			
Item	Dimension(Inch)		
	W	H	D
CSB36	36	34-1/2	24
CSB42	42	34-1/2	24

* Fixed Top Drawer Face



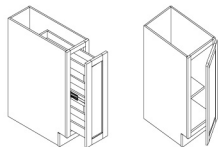
Lazy Susan			
Item	Dimension(Inch)		
	W	H	D
BLS33	33	34-1/2	24
BLS36	36	34-1/2	24



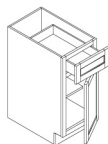
Drawer Base			
Item	Dimension(Inch)		
	W	H	D
DB12	12	34-1/2	24
DB15	15	34-1/2	24
DB18	18	34-1/2	24
DB21	21	34-1/2	24
DB24	24	34-1/2	24
DB30	30	34-1/2	24
DB36	36	34-1/2	24
*2DB & 4DB Not apply on all color			
2DB15	15	34-1/2	24
2DB18	18	34-1/2	24
2DB24	24	34-1/2	24
2DB30	30	34-1/2	24
4DB18	18	34-1/2	24
4DB21	21	34-1/2	24
4DB24	24	34-1/2	24
4DB30	30	34-1/2	24

*Please contact us for mor information and specification

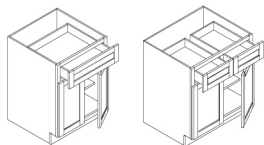
BASE CABINET



Base Full Height				
Item	Dimension(Inch)			
	W	H	D	
BFH09	9	34-1/2	24	
BSP09	9	34-1/2	24	
BSP12	12	34-1/2	24	

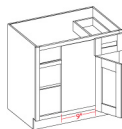


Base - One Drawer & One Door				
Item	Dimension(Inch)			
	W	H	D	
B09	9	34-1/2	24	
B12	12	34-1/2	24	
B15	15	34-1/2	24	
B18	18	34-1/2	24	
B21	21	34-1/2	24	



Base - One Drawer & Two Door				
Item	Dimension(Inch)			
	W	H	D	
B24	24	34-1/2	24	
B27	27	34-1/2	24	
B30	30	34-1/2	24	
B33	33	34-1/2	24	
B36	36	34-1/2	24	
B42	42	34-1/3	24	

*15mm serie, B33 - B42 have two drawers

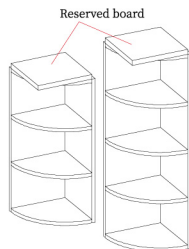


Base Blind Corner				
Item	Dimension(Inch)			
	W	H	D	
BBC36	36/39	34-1/2	24	
BBC42	42/45	34-1/2	24	

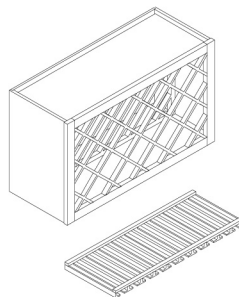


Base Microwave				
Item	Dimension(Inch)			
	W	H	D	
B27PM	27	34-1/2	24	
B30PM	30	34-1/2	24	

SHELVES



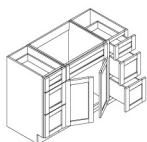
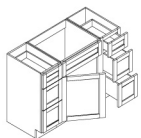
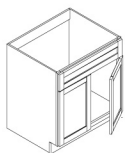
Wall End Shelf				
Item	Dimension(Inch)			
	W	H	D	
WES0930	9	30	12	
WES1230	12	30	12	
WES0940	9	40	12	
WES1240	12	40	12	



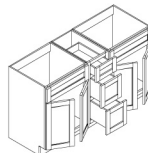
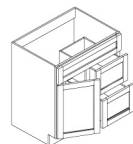
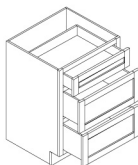
Wine Rack				
Item	Dimension(Inch)			
	W	H	D	
3015GR	30	15	12	
30GR	30	3/4	12	

*Please contact us for more information and specification

VANITY

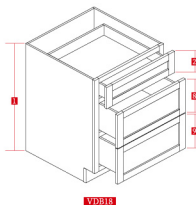
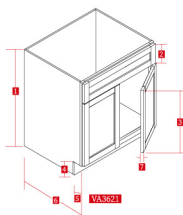


Item	Dimension(Inch)		
	W	H	D
VA2421	24	34-1/2	21
VA3021	30	34-1/2	21
VA3621	36	34-1/2	21
VDB12	12	34-1/2	21
VDB15	15	34-1/2	21
VDB18	18	34-1/2	21
VDB21	21	34-1/2	21
*DR / DL=Drawer on the Right / Left			
VA3021DR	30	34-1/2	21
VA3621DR	36	34-1/2	21
VA3021DL	30	34-1/2	21
VA3621DL	36	34-1/2	21
VA4221	42	34-1/2	21
VA4821	48	34-1/2	21
VA6021DS	60	34-1/2	21
VA6021DB	60	34-1/2	21
VA7221DB	72	34-1/2	21

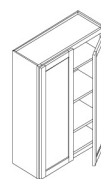
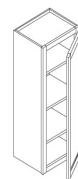
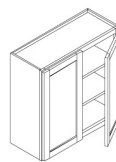
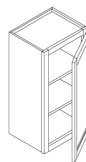


VANITY CABINET DIMENSION

- 1-Standard 34-1/2"
- 2-7"
- 3-21 3/4"
- 4-Standard 4-1/2"
- 5-Standard 2-1/2"
- 6-Standard 21"(To the face frame)
- 7-Standard 3/4"
- 8-10-3/4"
- 9-10-3/4"

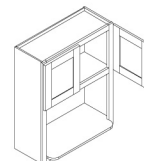
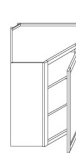


WALL CABINET



Item	Dimension(Inch)		
	W	H	D
Single Door			
W0930	9	30	12
W1230	12	30	12
W1530	15	30	12
W1830	18	30	12
W2130	21	30	12
Double Door			
W2430	24	30	12
W2730	27	30	12
W3030	30	30	12
W3330	33	30	12
W3630	36	30	12

Item	Dimension(Inch)		
	W	H	D
Single Door			
W0940	9	40	12
W1240	12	40	12
W1540	15	40	12
W1840	18	40	12
W2140	21	40	12
Double Door			
W2440	24	40	12
W2740	27	40	12
W3040	30	40	12
W3340	33	40	12
W3640	36	40	12



Item	Dimension(Inch)		
	W	H	D
WDC2430	24	30	12
WDC2440	24	40	12

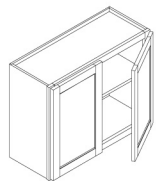
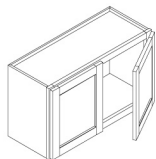
Item	Dimension(Inch)		
	W	H	D
WM2730	27	30	12
WM2740	27	40	12

*Shelf 18-1/2" depth; opening 15"H

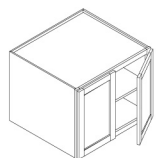
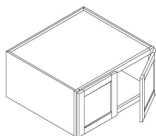
*Please contact us for more information and specification

*Glass door available for most selected style

WALL CABINET



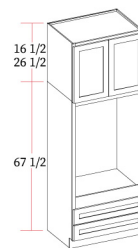
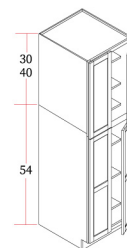
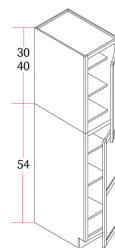
Item	Wall Cabinet Dimension(Inch)			
	W	H	D	
W1212	12	12	12	
W1512	15	12	12	
W1812	18	12	12	
W2712	27	12	12	
WDC2412	24	12	12	
W3012	30	12	12	
W3312	33	12	12	
W3612	36	12	12	
W3015	30	15	12	
W3315	33	15	12	
W3615	36	15	12	
W3018	30	18	12	
W3318	33	18	12	
W3618	36	18	12	
W3021	30	21	12	
W3321	33	21	12	
W3621	36	21	12	
W2424	24	24	12	
W3024	30	24	12	
W3324	33	24	12	
W3624	36	24	12	



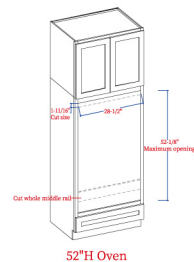
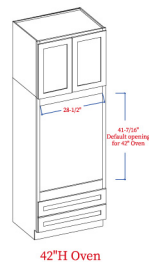
Item	Wall Cabinet Dimension(Inch)			
	W	H	D	
W301224	30	12	24	
W331224	33	12	24	
W361224	36	12	24	
W301524	30	15	24	
W331524	33	15	24	
W361524	36	15	24	
W301824	30	18	24	
W331824	33	18	24	
W361824	36	18	24	
W302124	30	21	24	
W332124	33	21	24	
W362124	36	21	24	
W302424	30	24	24	
W332424	33	24	24	
W362424	36	24	24	

*Glass door available for most selected style

PANTRY



Pantry			
Item	Dimension(Inch)		
	W	H	D
PC1884	18	84	24
PC2484	24	84	24
PC3084	30	84	24
PC1894	18	94	24
PC2494	24	94	24
PC3094	30	94	24
*Oven Pantry			
OC3384	33	84	24
OC3394	33	94	24



*Please contact us for more information and specification

ACCESSORIES

Item	Accessories	
	Dimension(Inch)	
	W	H
WF340	3	40
WF640	6	40
WF396	3	96
WF696	6	96
WF96*1-1/2	1-1/2	96
FF340	3	40
FB3*3	3	3
PCVFF3	3	96
CM1-1/2	1-1/2	96
CM2-1/2	2-1/2	96
CM3-1/2	3-1/2	96
CM4-1/2	4-1/2	96
SM	3/4	96
TK	4-1/2	96
LRM	N/A	96
OCM	1-1/16	96
SP4896*5mm	48	96
SP4896*12mm	48	96
BDEC24	24	34-1/2
WDEC1230	11-1/2	28-3/4
WDEC1240	11-1/2	38-3/4
PNL1230	12	30
PNL1240	12	40
PNL2436	24	36

*More decorative accessories available

